

# Flex Card Mass Print for Kindergarten

To Mass Print IPRs and End of 9 Weeks Reports you will need legal size paper.

**Go to Grades > Lists> Flex Card Mass Print**

At the Setup Box:

Make Sure of the year, district, School and make sure you put the Grade (00)

Check **Show Transfer Grades**

Set **Attendance Range: August 13, 2014 to Current Date**

Click OK

**Setup 07.19.14**

Year : 1415

District : 010

School : 004

Grade : 00

As of Date : Aug 26 2014

Show Recommended Grade (1pg only)

Show Transfer Grades

Session :

Attendance Range

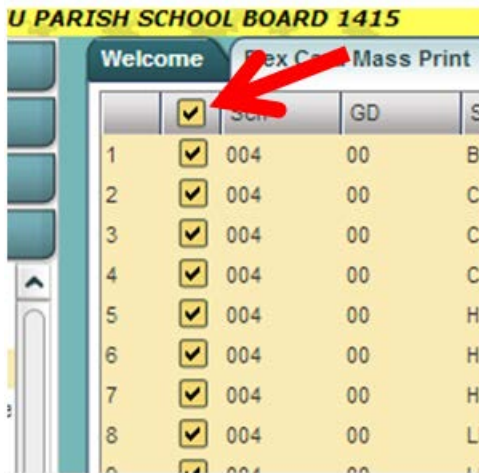
Start : Aug 13 2014

End : Aug 26 2014

Ok

IE 4040002 CRANFORD LAURA M

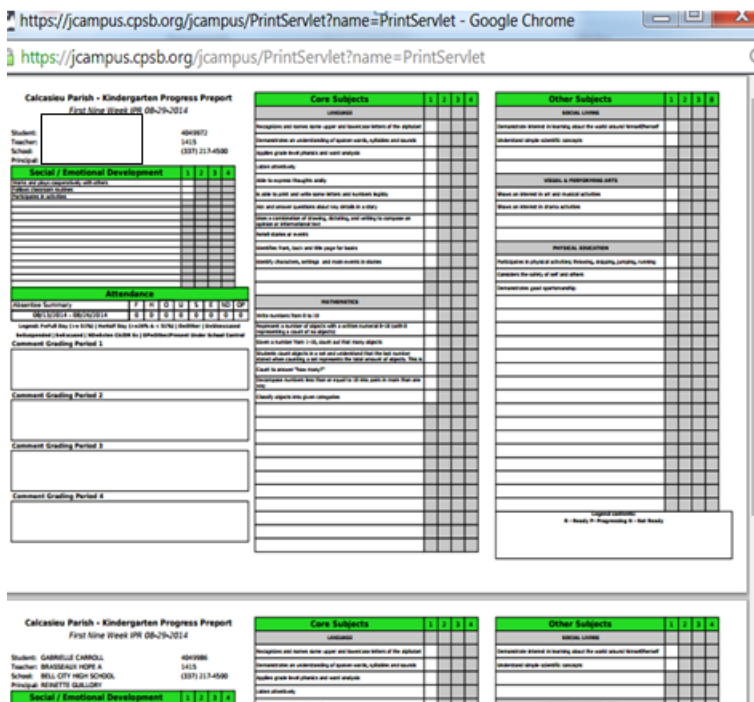
Click the “Select All” button above the select column to select all students.



Click “**Print Forms**” at the bottom right of the screen.



The Kindergarten Progress Reports should pop up.



**Right Click** on the progress reports , choose “**Print**”, then choose your printer


# Printer directions for HP 4515 Printers:

Click the blue link at the bottom of the print box: [Print using system dialog...\(Ctrl+Shift+P\)](#)

Print

Total: 1 sheet of paper

Print Cancel

Destination  HP LaserJet P4515 PCL6...  
Change...

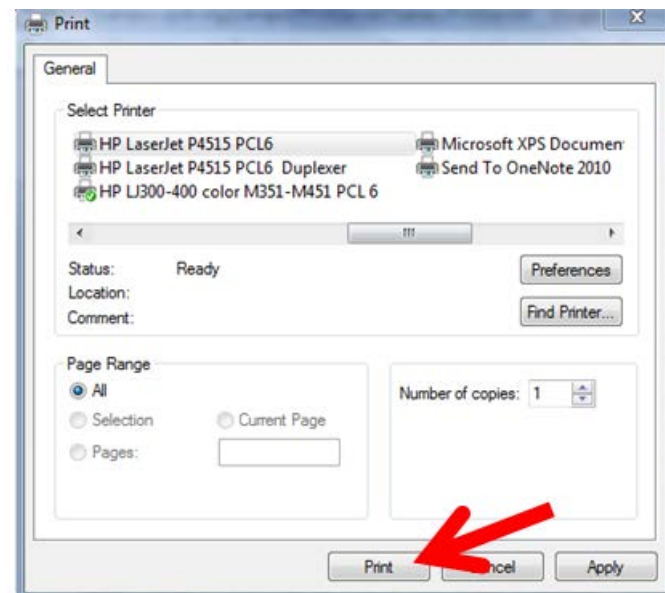
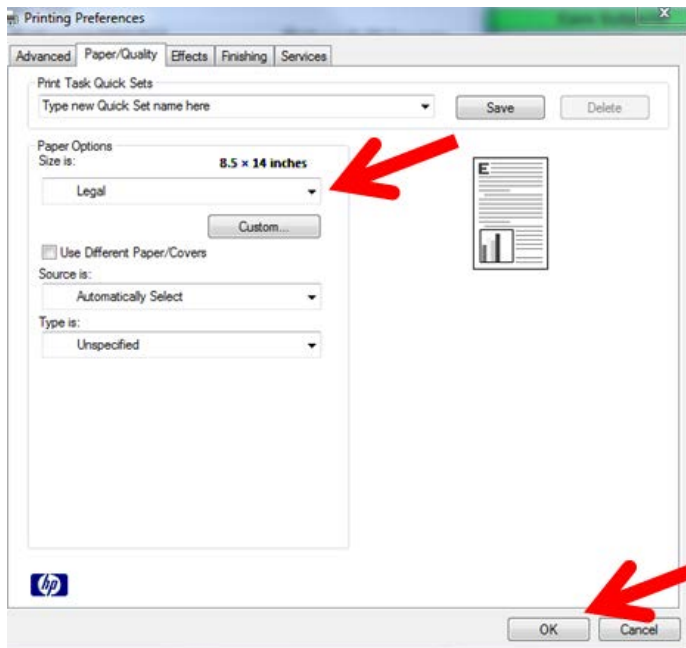
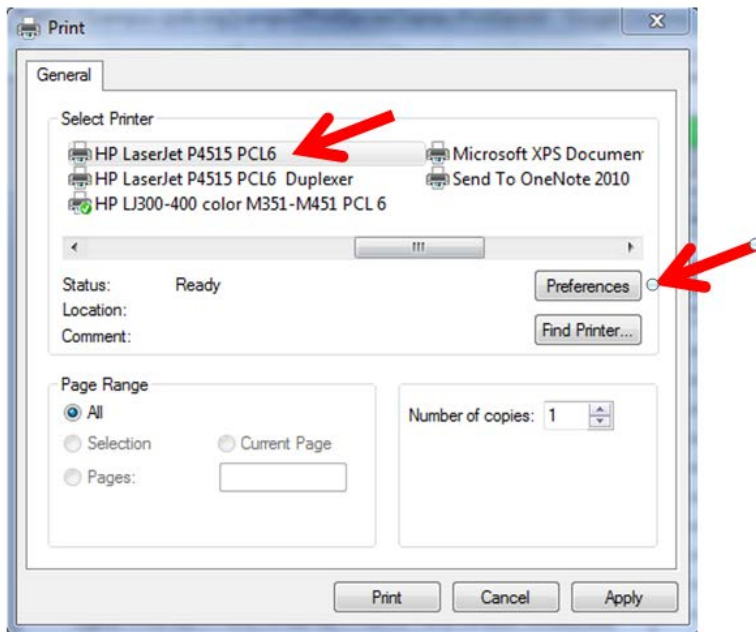
Pages  All  
 e.g. 1-5, 8, 11-13

Copies 1 + -

Color  Color  
 Black and white

Options  Fit to page  
 Two-sided

[Print using system dialog... \(Ctrl+Shift+P\)](#)



- Select the correct printer
- Go to Preferences
- Under Paper Options, go to Legal
- Click OK
- Click Print

## For HP 4300 Printers:


**Right Click** on the progress reports , choose **“Print”**, then choose your printer

Click the blue link at the bottom of the print box: [Print using system dialog...\(Ctrl+Shift+P\)](#)

webpams.cpsb.org/jcampus/PrintServlet?

Print

Total: 1 sheet of paper

Destination  HP LaserJet 4200/4300 ...

Pages  All

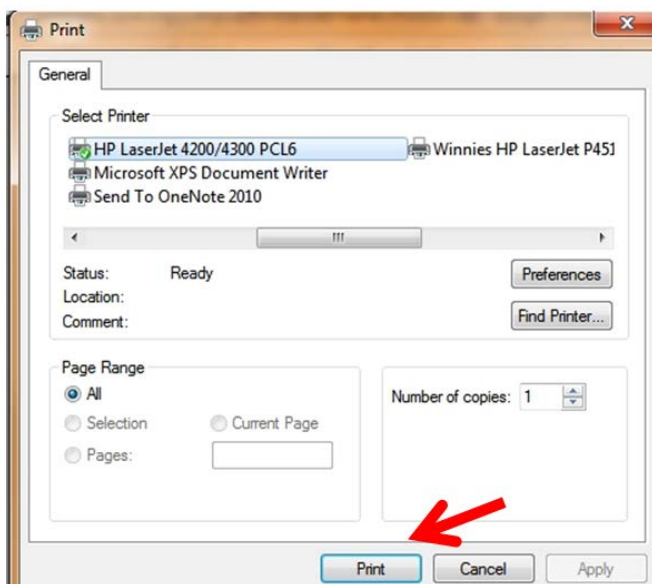
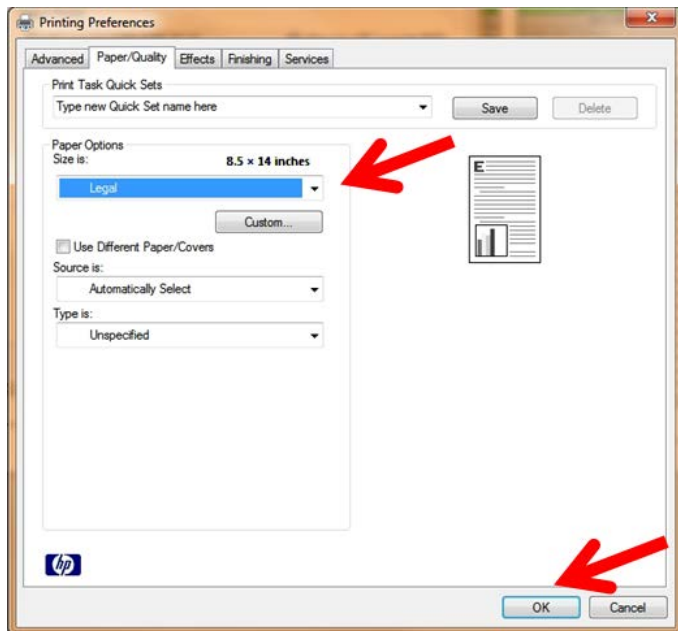
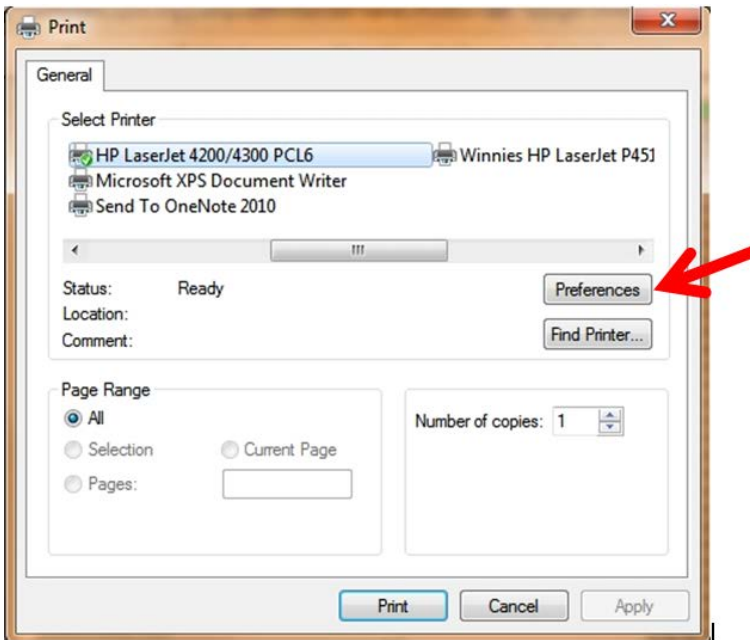
Copies

Color  Color

Black and white

Options  Fit to page

[Print using system dialog... \(Ctrl+Shift+P\)](#)



- Select the correct printer
- Go to Preferences
- Under Paper Options, go to Legal
- Click OK
- Click Print