



21-22

**CALCASIEU PARISH SCHOOL BOARD
RETURN TO SCHOOL PLAN**

TABLE OF CONTENTS

Message from Superintendent Karl Bruchhaus	3
Introduction	4
Calcasieu Parish School Board Operations	4
CPSB Connected Classrooms - Virtual Program Option.....	5
Student Attendance.....	6
Transportation and Bus Protocols.....	6
Communication.....	6
Travel Restrictions.....	6
Cafeteria Protocols.....	7
Other School Considerations.....	8
Locker Rooms.....	8
P.E. Uniforms.....	8
Water Fountains.....	8
Enhanced Safety Measures.....	9
Social Distancing.....	9
Face Coverings.....	9
Cleaning and Disinfection Measures.....	9
Handwashing.....	9
Plexiglass.....	9
Employee and Student Safety.....	10
Student Protocols and Screening Overview.....	10
Employee Protocols and Screening Overview.....	11
Employee or Student Exposure.....	11
Visitors on Campus.....	12
Additional Details.....	12

MESSAGE FROM SUPERINTENDENT KARL BRUCHHAUS

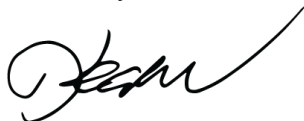
To our families, employees, and all other stakeholders,

There is no doubt that we have had an unprecedented eighteen months here in Calcasieu Parish. While we can certainly recall all of our catastrophic events and the ongoing turmoil they have caused, we must continue as education stakeholders to look towards the future. The 2021-2022 school year starts a new journey for our students on Friday, August 13, our first day of school. We will be rolling out several new initiatives, along with continuing some of our existing practices.

- CPSB will continue to work to provide a safe and secure environment for our students, including honoring required and recommended COVID-19 protocols. This Return to School Plan lays out scenarios for the different levels of COVID-19 that we could potentially experience.
- Each student will be provided access to an electronic device, including iPads for all Pre-K-2nd grade students and laptops for students in grades 3-12. New instructional software programs will be available: *Canvas* for learning management, *Edgenuity* for self-directed instruction, and *Microsoft 365* tools to enhance all of our programs. These resources should greatly assist in the learning process both in the classroom setting and from home when necessary.
- Our CPSB Connected Classrooms online learning offering is available again this year for students meeting entrance requirements. While the registration deadline for the program has passed, the district will continue to adapt should COVID-19 protocols require changes in school settings.
- Construction on our damaged buildings will continue throughout the school year. Like so many of our stakeholders, the school system continues to struggle with reimbursement issues and the staging of work.

No matter what hurdles come our way in 2021-2022, we all must work to continue to promote academic achievement. Our unified message should be one of student success, positivity, and flexibility. Together we can open our school year with an eye on creating opportunities for all of our students to grow.

Sincerely,



Karl Bruchhaus
Superintendent

INTRODUCTION

For the second year in a row, the staff members of the Calcasieu Parish School Board have worked together to create reopening plan to offer support and guidance to our families as we continue to navigate this COVID-19 Pandemic together. As always, it is our goal to provide a safe and healthy school environment for our students and employees, especially during this time.

The guidelines referenced in this plan are based on guidance from the several external organizations such as the Louisiana Department of Education, Center for Disease Control and Prevention, and Louisiana Department of Health. **This plan is developed based on current guidelines and recommendations and is subject to change based on additional information from these organizations and/or BESE.**

CALCASIEU PARISH SCHOOL BOARD OPERATIONS

Before implementation, information on the opening of school will be sent to all employees, students, and parents. Additionally, the individual needs and circumstances of students with disabilities will be addressed. If the state of Louisiana reverts to phases, we will implement a phase dependent education plan. Those plans will be added here if/when necessary.

CPSB CONNECTED CLASSROOMS – VIRTUAL PROGRAM OPTION



Due to the mask mandate issued by Governor John Bel Edwards on August 2, 2021, the deadline to enroll in CPSB Connected Classrooms has been extended. The deadline to enroll is now August 20. The qualifications to enroll remain the same and can be viewed [here](#). Once a student enrolls in our virtual option, the student must remain enrolled in the program for the entire school year. Click the link below for additional information about the program.

[CPSB Connected Classrooms](#)

Devices will be available for all students. Outdoor WiFi access will be available at all CPSB schools. Students without internet access at home should contact their school to find out what other WiFi options are available. Internet may also be available via CPSB Smart Buses at announced locations, pending availability.

STUDENT ATTENDANCE

Attendance regulations will follow normal attendance requirements. Those can be viewed [here](#) in the Student Code of Conduct.

TRANSPORTATION AND BUS PROTOCOLS



Mask Mandate on Buses

In accordance with federal guidelines, masks will be required on school buses until further notice.

COMMUNICATION

As part of our commitment to families, the district is continuously looking for ways to improve and grow. We will be using a new communication system beginning this school year, and we are excited about the opportunities now available. Text messaging will now be included in our notifications. Visit [Student Progress Center](#) to make sure all contact information is updated.

We continue to strongly encourage families to access the most current information about school operations through the following channels:

- CPSB [website](#)
- CPSB social media platforms – [Facebook](#), [Instagram](#) and [Twitter](#)
- Individual school websites
- Student email

TRAVEL RESTRICTIONS



School related travel may be allowed with approval from the Superintendent.

CAFETERIA PROTOCOLS



All students on campus will be offered breakfast upon entering school. Students will be allowed to eat in the cafeteria, classrooms, or in other areas of the school as determined by the principal. In all circumstances, students will maintain the recommended social distancing protocols.

For lunch, schools will establish a schedule for each class to enter the cafeteria serving line. Students will pick-up meals and sit within their fixed classroom group, maintaining social distance to the maximum extent possible. Teachers may take student groups to eat in other areas of campus as determined by the principal.

The cafeteria staff will properly clean and sanitize tables and seating surfaces between feeding groups in the dining hall. Cafeteria workers will wear proper PPE. Food waste will be discarded in various garbage receptacles located throughout the campus, and custodians will assist with bringing the trash to the dumpsters.

For students enrolled in virtual learning, the School Nutrition Program will partner with a contract company for home deliveries, or curbside meals will be available for pick up.

Important Information pertaining to all meal phases:

- All regulations and guidelines (from the CDC, USDA, LDOE, CNP, and LDH) will continue to be followed in all processes of meal service, including delivery, storage, preparation, serving, and cleaning.
- Students will wash their hands upon entering school, before meals, after meals, and before dismissal. Students should wash their hands and/or use hand sanitizer every two hours.
- In Phase 1, 2, or 3, all meals will be served in disposable containers.
- Self-service options will not be available. All meals will be packed and served by the cafeteria staff.
- Students/employees won't be allowed to share food or beverages.
- All parents are encouraged to utilize on-line payment options to minimize physical contact, understanding there is a fee to utilize the service. If this is not possible, parents can still send checks or cash in an envelope as pre-payment. Payments will not be accepted while students are in the serving line to reduce physical contact.

OTHER SCHOOL CONSIDERATIONS



Locker Rooms

While in locker rooms, students are to stay socially distanced to the maximum extent possible, eliminate contact with others, such as handshakes. avoid touching surfaces touched by others to the extent feasible. Avoid anyone coughing, sneezing, or that appears to be sick.

P.E. Uniforms

P.E. uniforms will be required for middle and high school students beginning October 1 unless families are notified by an individual school that gyms and/or locker rooms are not open due to construction.

Water Fountains

Water fountains will remain closed indefinitely. The district is working to expand the availability of bottle filling stations, and students are strongly encouraged to bring a water bottle to school daily.

ENHANCED SAFETY MEASURES

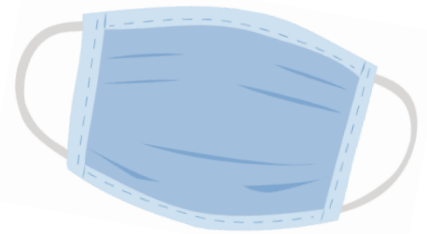


SOCIAL DISTANCING

Social distancing is an effective way to prevent potential infection. CPSB will employ social distancing strategies to increase space between individuals, adjust seating arrangements for school buses and classrooms and post signs to remind staff and students to social distance to the maximum extent possible. Specific practices will be customized for each school and may include designating building entrances by grade level, mapping traffic patterns through the school, and scheduling student and staff groupings to be as static as possible.

FACE COVERINGS

As per the mandate from Governor John Bel Edwards, issued on August 2, 2021, students in K-12 will be required to wear masks until September 1. Face coverings for all students do not have to be designated colors, but they should not be derogatory, offensive, political in nature, or distracting to the school environment as determined by school administration. ***Medical mask exemption forms can be obtained at the school level. These forms must be completed by a physician and returned to the school.***



CLEANING AND DISINFECTION MEASURES

Intensified cleaning and disinfection measures will ensure the physical spaces, equipment, and materials staff and students come into contact with remain safe. High-touch surfaces such as doorknobs, handles, fixtures, etc. will be cleaned several times throughout the day. Restrooms will be monitored and cleaned more frequently throughout the day. Water fountains remain closed, and students are encouraged to bring water bottles to campus. We are continuing to install bottle filling stations across the district.

HANDWASHING

Handwashing or use of hand sanitizer that contains at least 60% alcohol will occur at arrival, after changing classrooms or other locations, before and after eating, and at the exit. Good hygiene practices will be encouraged and discussed in the classroom.



PLEXIGLASS

Plexiglass barriers continue to be available for installation in various locations throughout the campuses, such as front office counters and designated teacher workspaces.

EMPLOYEE AND STUDENT SAFETY



STUDENT PROTOCOLS AND SCREENING OVERVIEW

Parents are encouraged to complete a health screening process at home before sending the student to school (see below for symptoms). The student should stay home if he/she is symptomatic, sick or has been in **direct** contact with someone who has tested positive for COVID-19.

Symptoms that may require a student to stay home:

- Fever of listed temperature or greater:
 - Oral: 100.4 F
 - Forehead/Temporal (Infrared): 99.8 F
- Chills or rigors
- Cough
- Shortness of breath or difficulty breathing
- Fatigue
- Muscle pain or body aches
- Headache
- New loss of taste or smell
- Sore throat
- Congestion or runny nose
- Nausea or vomiting
- Diarrhea

Symptomatic students will be isolated and supervised until the student is picked up. It will be the responsibility of the parent/guardian to promptly pick up the student from school.

Students may be required to present a doctor's release to return to school.

Parents are strongly encouraged to notify the school principal if a student, or someone they have been in **direct** contact with, tests positive for COVID-19. Principals will work closely with Risk Management to determine the next steps.

EMPLOYEE PROTOCOLS AND SCREENING OVERVIEW

Employees will be advised to stay home if they are sick or have been in direct contact with someone who has tested positive for COVID-19.

Symptoms that may require an employee to stay home:

- Fever of listed temperature or greater:
 - Oral: 100.4 F
 - Forehead/Temporal (Infrared): 99.8 F
- Chills or rigors
- Cough
- Shortness of breath or difficulty breathing
- Fatigue
- Muscle pain or body aches
- Headache
- New loss of taste or smell
- Sore throat
- Congestion or runny nose
- Nausea or vomiting
- Diarrhea

Employees may be required to present a doctor's release to return to work.

Employees will need to contact their supervisor if they are experiencing symptoms of COVID-19, test positive for COVID-19 or are directly exposed to someone who tests positive for COVID-19. Supervisors will work closely with Risk Management to determine the next steps.

EMPLOYEE OR STUDENT EXPOSURE

CPSB remains in close contact with the Louisiana Department of Health. The regional director's office will give guidance for employee and student exposure to COVID-19. In the event a CPSB employee or student has been directly exposed to the virus, the first concern is for the health and safety of those who may be at risk for additional exposure. CPSB will notify parents if there is a positive case at their child's school and contact any potential direct contacts.

VISITORS ON CAMPUS

The safety of our staff and students remains the district's primary concern. Therefore, visitors are encouraged to make an appointment to visit CPSB schools and offices. To help prevent the spread of the virus and reduce the risk of exposure to our staff and students, visitors may be subjected to simple screening questions before entering the building. Participation is important to help us take precautionary measures to protect our visitors, students, and staff in the building.

ADDITIONAL DETAILS

Additional information and specific details will be released as necessary. If changes are made to this document, revisions will be noted in yellow, and the revision date will be located on page 1. To view information regarding school supplies, lunch menus, school calendar, and more, visit our [Back-to-School Information](#) site.